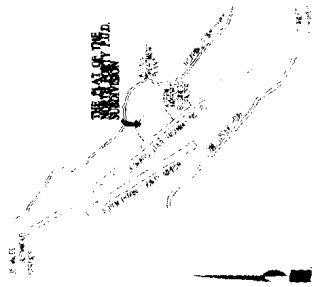


B.50 P.18

THE PLAT OF THE NORTH FORTY P.U.D. SUBDIVISION

A TRACT OF LAND LOCATED WITHIN SECTION 34, TOWNSHIP 3 SOUTH, RANGE 65 WEST OF THE SIXTH PRINCIPAL MERIDIAN, COUNTY OF PUEBLO, STATE OF COLORADO

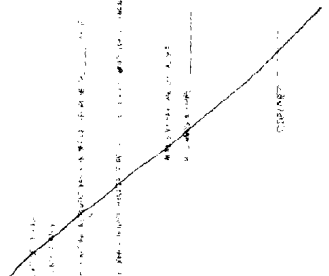
PLAT OF THE NORTH FORTY P.U.D. SUBDIVISION



NEIGHBORHOOD MAP

PLAT OF THE NORTH FORTY P.U.D. SUBDIVISION

PLAT OF THE NORTH FORTY P.U.D. SUBDIVISION



PLAT OF THE NORTH FORTY P.U.D. SUBDIVISION

PLAT OF THE NORTH FORTY P.U.D. SUBDIVISION

PLAT OF THE NORTH FORTY P.U.D. SUBDIVISION

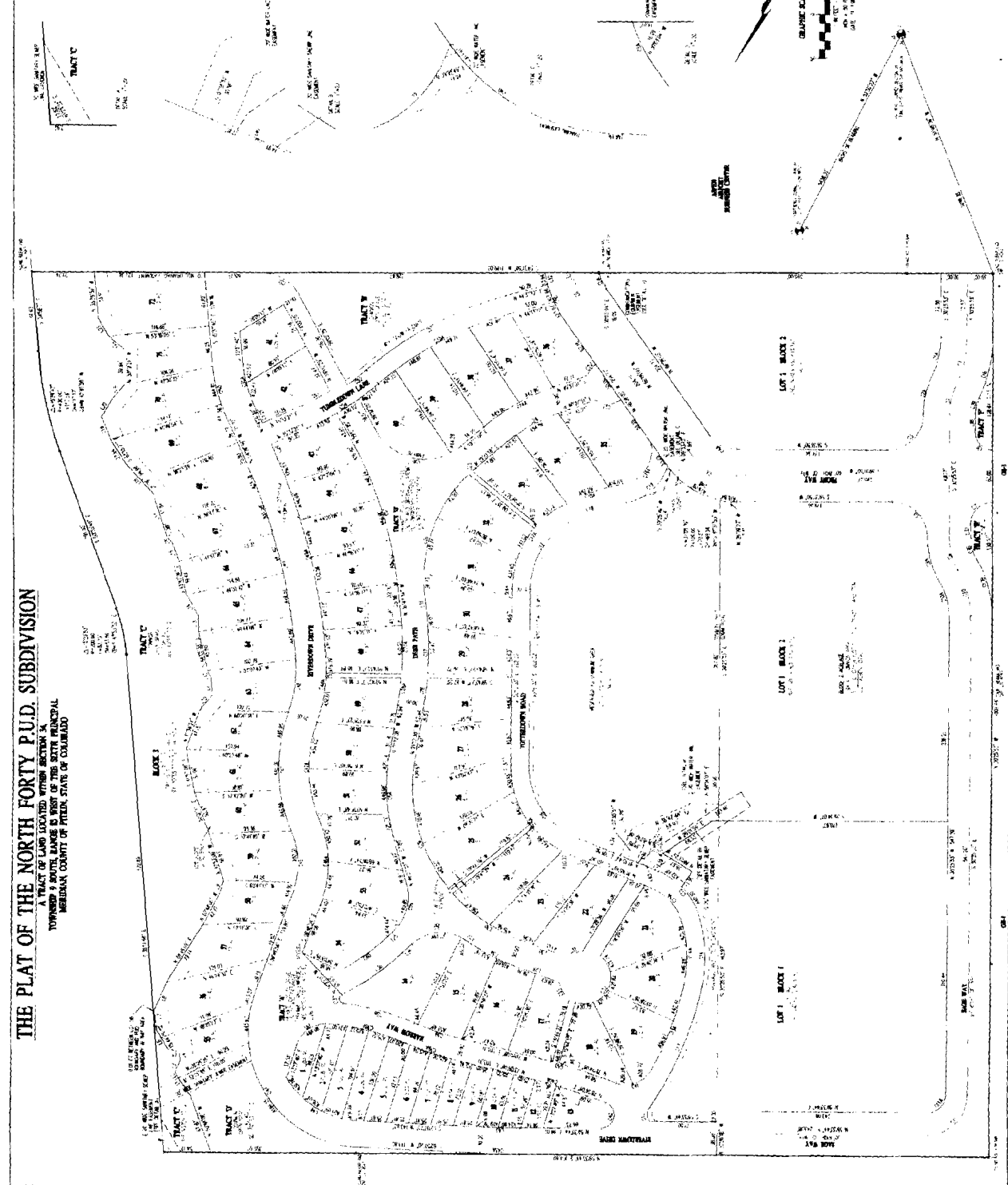


B.50

P.19

B.50  
CASE NO. P.19  
MAY 19

TRACT NO.	AREA	ACRES	FRONT FEET	DEPTH FEET	PERMITS	REMARKS
1	TRACT 1	1.25	100	125	1	
2	TRACT 2	1.25	100	125	1	
3	TRACT 3	1.25	100	125	1	
4	TRACT 4	1.25	100	125	1	
5	TRACT 5	1.25	100	125	1	
6	TRACT 6	1.25	100	125	1	
7	TRACT 7	1.25	100	125	1	
8	TRACT 8	1.25	100	125	1	
9	TRACT 9	1.25	100	125	1	
10	TRACT 10	1.25	100	125	1	
11	TRACT 11	1.25	100	125	1	
12	TRACT 12	1.25	100	125	1	
13	TRACT 13	1.25	100	125	1	
14	TRACT 14	1.25	100	125	1	
15	TRACT 15	1.25	100	125	1	
16	TRACT 16	1.25	100	125	1	
17	TRACT 17	1.25	100	125	1	
18	TRACT 18	1.25	100	125	1	
19	TRACT 19	1.25	100	125	1	
20	TRACT 20	1.25	100	125	1	
21	TRACT 21	1.25	100	125	1	
22	TRACT 22	1.25	100	125	1	
23	TRACT 23	1.25	100	125	1	
24	TRACT 24	1.25	100	125	1	
25	TRACT 25	1.25	100	125	1	
26	TRACT 26	1.25	100	125	1	
27	TRACT 27	1.25	100	125	1	
28	TRACT 28	1.25	100	125	1	
29	TRACT 29	1.25	100	125	1	
30	TRACT 30	1.25	100	125	1	
31	TRACT 31	1.25	100	125	1	
32	TRACT 32	1.25	100	125	1	
33	TRACT 33	1.25	100	125	1	
34	TRACT 34	1.25	100	125	1	
35	TRACT 35	1.25	100	125	1	
36	TRACT 36	1.25	100	125	1	
37	TRACT 37	1.25	100	125	1	
38	TRACT 38	1.25	100	125	1	
39	TRACT 39	1.25	100	125	1	
40	TRACT 40	1.25	100	125	1	
41	TRACT 41	1.25	100	125	1	
42	TRACT 42	1.25	100	125	1	
43	TRACT 43	1.25	100	125	1	
44	TRACT 44	1.25	100	125	1	
45	TRACT 45	1.25	100	125	1	
46	TRACT 46	1.25	100	125	1	
47	TRACT 47	1.25	100	125	1	
48	TRACT 48	1.25	100	125	1	
49	TRACT 49	1.25	100	125	1	
50	TRACT 50	1.25	100	125	1	
51	TRACT 51	1.25	100	125	1	
52	TRACT 52	1.25	100	125	1	
53	TRACT 53	1.25	100	125	1	
54	TRACT 54	1.25	100	125	1	
55	TRACT 55	1.25	100	125	1	
56	TRACT 56	1.25	100	125	1	
57	TRACT 57	1.25	100	125	1	
58	TRACT 58	1.25	100	125	1	
59	TRACT 59	1.25	100	125	1	
60	TRACT 60	1.25	100	125	1	
61	TRACT 61	1.25	100	125	1	
62	TRACT 62	1.25	100	125	1	
63	TRACT 63	1.25	100	125	1	
64	TRACT 64	1.25	100	125	1	
65	TRACT 65	1.25	100	125	1	
66	TRACT 66	1.25	100	125	1	
67	TRACT 67	1.25	100	125	1	
68	TRACT 68	1.25	100	125	1	
69	TRACT 69	1.25	100	125	1	
70	TRACT 70	1.25	100	125	1	
71	TRACT 71	1.25	100	125	1	
72	TRACT 72	1.25	100	125	1	
73	TRACT 73	1.25	100	125	1	
74	TRACT 74	1.25	100	125	1	
75	TRACT 75	1.25	100	125	1	
76	TRACT 76	1.25	100	125	1	
77	TRACT 77	1.25	100	125	1	
78	TRACT 78	1.25	100	125	1	
79	TRACT 79	1.25	100	125	1	
80	TRACT 80	1.25	100	125	1	
81	TRACT 81	1.25	100	125	1	
82	TRACT 82	1.25	100	125	1	
83	TRACT 83	1.25	100	125	1	
84	TRACT 84	1.25	100	125	1	
85	TRACT 85	1.25	100	125	1	
86	TRACT 86	1.25	100	125	1	
87	TRACT 87	1.25	100	125	1	
88	TRACT 88	1.25	100	125	1	
89	TRACT 89	1.25	100	125	1	
90	TRACT 90	1.25	100	125	1	
91	TRACT 91	1.25	100	125	1	
92	TRACT 92	1.25	100	125	1	
93	TRACT 93	1.25	100	125	1	
94	TRACT 94	1.25	100	125	1	
95	TRACT 95	1.25	100	125	1	
96	TRACT 96	1.25	100	125	1	
97	TRACT 97	1.25	100	125	1	
98	TRACT 98	1.25	100	125	1	
99	TRACT 99	1.25	100	125	1	
100	TRACT 100	1.25	100	125	1	

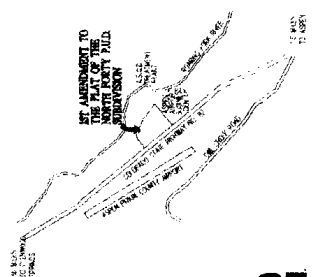


**THE PLAT OF THE NORTH FORTY P.U.D. SUBDIVISION**  
 A TRACT OF LAND LOCATED WITHIN SECTION 4,  
 TOWNSHIP 9 SOUTH, RANGE 6 WEST OF THE SIXTH PRINCIPAL  
 MERIDIAN, COUNTY OF PUEBLO, STATE OF COLORADO

CASH NO. **B.52**  
MAP NO. **P.47**

# 1ST AMENDMENT TO THE PLAT OF THE NORTH FORTY P.U.D. SUBDIVISION

A PLAT OF LAND LOCATED WITHIN THE CITY AND TOWNSHIP OF NORTH FORTY, MERIEN COUNTY OF THE STATE OF COLORADO



VEDITY MAP

ALL INTERESTS IN THE ABOVE DESCRIBED PROPERTY ARE HEREBY RELEASED TO THE CITY OF NORTH FORTY, COLORADO, AND THE CITY ENGINEER HAS REVIEWED THE PLAT AND FOUND IT TO BE IN ACCORDANCE WITH THE CITY ENGINEERING DEPARTMENT RECORDS AND THE CITY ENGINEER HAS THEREFORE RECORDED THIS PLAT AS SUCH.

RECORDS SECTION  
CITY OF NORTH FORTY, COLORADO  
RECORDED IN THE CITY ENGINEERING DEPARTMENT RECORDS ON THE 15TH DAY OF JANUARY, 1950.



THE CITY ENGINEER HAS REVIEWED THE PLAT AND FOUND IT TO BE IN ACCORDANCE WITH THE CITY ENGINEERING DEPARTMENT RECORDS AND THE CITY ENGINEER HAS THEREFORE RECORDED THIS PLAT AS SUCH.

*John R. B. B. B.*  
CITY ENGINEER



*Franklin D. D. D.*  
CITY ENGINEER

THE CITY ENGINEER HAS REVIEWED THE PLAT AND FOUND IT TO BE IN ACCORDANCE WITH THE CITY ENGINEERING DEPARTMENT RECORDS AND THE CITY ENGINEER HAS THEREFORE RECORDED THIS PLAT AS SUCH.

*John R. B. B. B.*  
CITY ENGINEER

1. THE CITY ENGINEER HAS REVIEWED THE PLAT AND FOUND IT TO BE IN ACCORDANCE WITH THE CITY ENGINEERING DEPARTMENT RECORDS AND THE CITY ENGINEER HAS THEREFORE RECORDED THIS PLAT AS SUCH.

RECORDED IN THE CITY ENGINEERING DEPARTMENT RECORDS ON THE 15TH DAY OF JANUARY, 1950.

1950

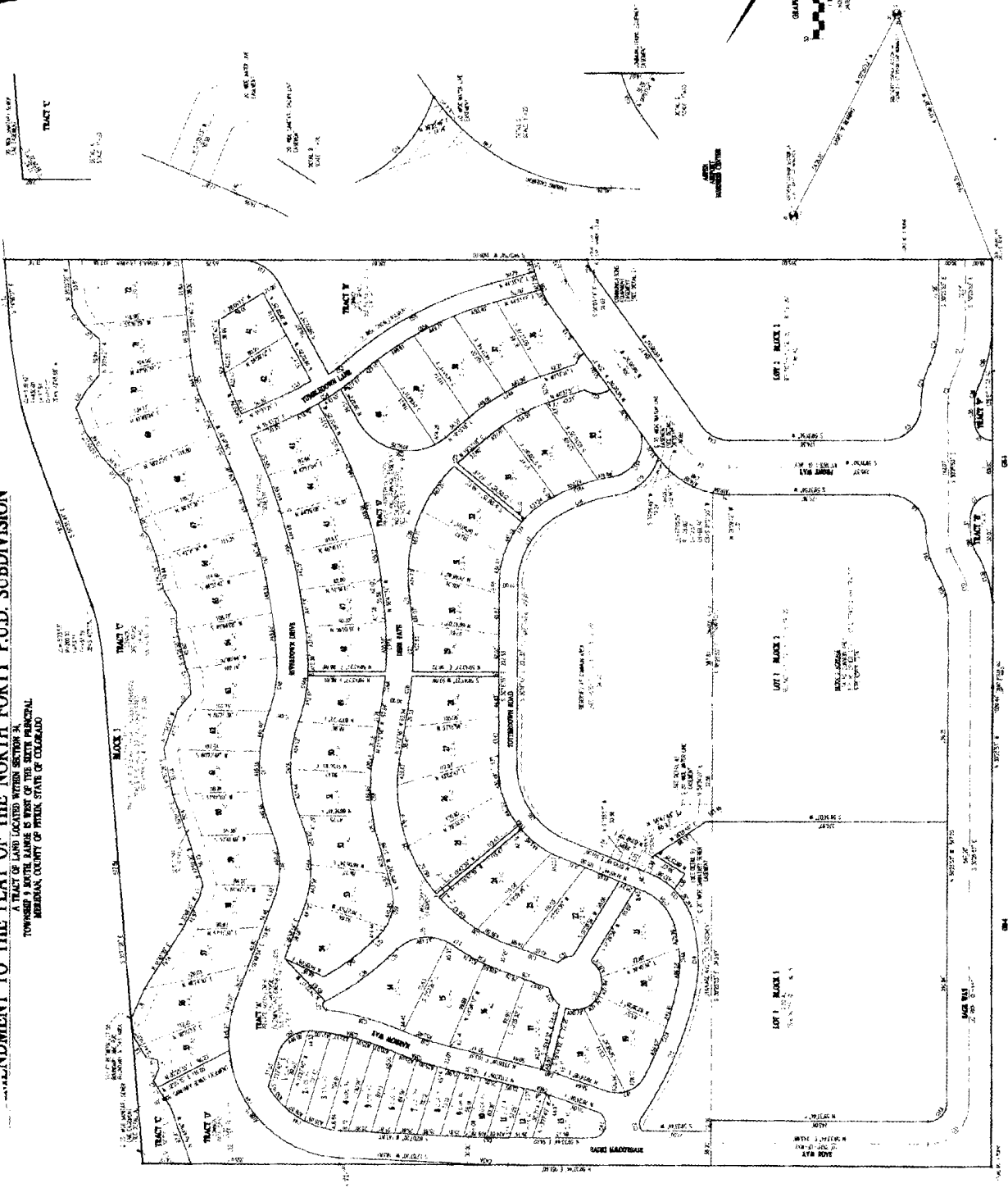
B.52

CASE NO. P.48  
MAP NO.

PLAT OF THE NORTH FORTY P.U.D. SUBDIVISION  
A TRACT OF LAND LOCATED WITHIN SECTION 34,  
TOWNSHIP 4 NORTH RANGE 5 WEST OF THE SIXTH PRINCIPAL  
MERIDIAN, COUNTY OF PUEBLO, STATE OF COLORADO

TRACT	AREA	ACRES	REMARKS
TRACT 1	1.25	1.25	...
TRACT 2	1.25	1.25	...
TRACT 3	1.25	1.25	...
TRACT 4	1.25	1.25	...
TRACT 5	1.25	1.25	...
TRACT 6	1.25	1.25	...
TRACT 7	1.25	1.25	...
TRACT 8	1.25	1.25	...
TRACT 9	1.25	1.25	...
TRACT 10	1.25	1.25	...
TRACT 11	1.25	1.25	...
TRACT 12	1.25	1.25	...
TRACT 13	1.25	1.25	...
TRACT 14	1.25	1.25	...
TRACT 15	1.25	1.25	...
TRACT 16	1.25	1.25	...
TRACT 17	1.25	1.25	...
TRACT 18	1.25	1.25	...
TRACT 19	1.25	1.25	...
TRACT 20	1.25	1.25	...
TRACT 21	1.25	1.25	...
TRACT 22	1.25	1.25	...
TRACT 23	1.25	1.25	...
TRACT 24	1.25	1.25	...
TRACT 25	1.25	1.25	...
TRACT 26	1.25	1.25	...
TRACT 27	1.25	1.25	...
TRACT 28	1.25	1.25	...
TRACT 29	1.25	1.25	...
TRACT 30	1.25	1.25	...
TRACT 31	1.25	1.25	...
TRACT 32	1.25	1.25	...
TRACT 33	1.25	1.25	...
TRACT 34	1.25	1.25	...
TRACT 35	1.25	1.25	...
TRACT 36	1.25	1.25	...
TRACT 37	1.25	1.25	...
TRACT 38	1.25	1.25	...
TRACT 39	1.25	1.25	...
TRACT 40	1.25	1.25	...
TRACT 41	1.25	1.25	...
TRACT 42	1.25	1.25	...
TRACT 43	1.25	1.25	...
TRACT 44	1.25	1.25	...
TRACT 45	1.25	1.25	...
TRACT 46	1.25	1.25	...
TRACT 47	1.25	1.25	...
TRACT 48	1.25	1.25	...
TRACT 49	1.25	1.25	...
TRACT 50	1.25	1.25	...
TRACT 51	1.25	1.25	...
TRACT 52	1.25	1.25	...
TRACT 53	1.25	1.25	...
TRACT 54	1.25	1.25	...
TRACT 55	1.25	1.25	...
TRACT 56	1.25	1.25	...
TRACT 57	1.25	1.25	...
TRACT 58	1.25	1.25	...
TRACT 59	1.25	1.25	...
TRACT 60	1.25	1.25	...
TRACT 61	1.25	1.25	...
TRACT 62	1.25	1.25	...
TRACT 63	1.25	1.25	...
TRACT 64	1.25	1.25	...
TRACT 65	1.25	1.25	...
TRACT 66	1.25	1.25	...
TRACT 67	1.25	1.25	...
TRACT 68	1.25	1.25	...
TRACT 69	1.25	1.25	...
TRACT 70	1.25	1.25	...
TRACT 71	1.25	1.25	...
TRACT 72	1.25	1.25	...
TRACT 73	1.25	1.25	...
TRACT 74	1.25	1.25	...
TRACT 75	1.25	1.25	...
TRACT 76	1.25	1.25	...
TRACT 77	1.25	1.25	...
TRACT 78	1.25	1.25	...
TRACT 79	1.25	1.25	...
TRACT 80	1.25	1.25	...
TRACT 81	1.25	1.25	...
TRACT 82	1.25	1.25	...
TRACT 83	1.25	1.25	...
TRACT 84	1.25	1.25	...
TRACT 85	1.25	1.25	...
TRACT 86	1.25	1.25	...
TRACT 87	1.25	1.25	...
TRACT 88	1.25	1.25	...
TRACT 89	1.25	1.25	...
TRACT 90	1.25	1.25	...
TRACT 91	1.25	1.25	...
TRACT 92	1.25	1.25	...
TRACT 93	1.25	1.25	...
TRACT 94	1.25	1.25	...
TRACT 95	1.25	1.25	...
TRACT 96	1.25	1.25	...
TRACT 97	1.25	1.25	...
TRACT 98	1.25	1.25	...
TRACT 99	1.25	1.25	...
TRACT 100	1.25	1.25	...

TRACT	AREA	ACRES	REMARKS
TRACT 1	1.25	1.25	...
TRACT 2	1.25	1.25	...
TRACT 3	1.25	1.25	...
TRACT 4	1.25	1.25	...
TRACT 5	1.25	1.25	...
TRACT 6	1.25	1.25	...
TRACT 7	1.25	1.25	...
TRACT 8	1.25	1.25	...
TRACT 9	1.25	1.25	...
TRACT 10	1.25	1.25	...
TRACT 11	1.25	1.25	...
TRACT 12	1.25	1.25	...
TRACT 13	1.25	1.25	...
TRACT 14	1.25	1.25	...
TRACT 15	1.25	1.25	...
TRACT 16	1.25	1.25	...
TRACT 17	1.25	1.25	...
TRACT 18	1.25	1.25	...
TRACT 19	1.25	1.25	...
TRACT 20	1.25	1.25	...
TRACT 21	1.25	1.25	...
TRACT 22	1.25	1.25	...
TRACT 23	1.25	1.25	...
TRACT 24	1.25	1.25	...
TRACT 25	1.25	1.25	...
TRACT 26	1.25	1.25	...
TRACT 27	1.25	1.25	...
TRACT 28	1.25	1.25	...
TRACT 29	1.25	1.25	...
TRACT 30	1.25	1.25	...
TRACT 31	1.25	1.25	...
TRACT 32	1.25	1.25	...
TRACT 33	1.25	1.25	...
TRACT 34	1.25	1.25	...
TRACT 35	1.25	1.25	...
TRACT 36	1.25	1.25	...
TRACT 37	1.25	1.25	...
TRACT 38	1.25	1.25	...
TRACT 39	1.25	1.25	...
TRACT 40	1.25	1.25	...
TRACT 41	1.25	1.25	...
TRACT 42	1.25	1.25	...
TRACT 43	1.25	1.25	...
TRACT 44	1.25	1.25	...
TRACT 45	1.25	1.25	...
TRACT 46	1.25	1.25	...
TRACT 47	1.25	1.25	...
TRACT 48	1.25	1.25	...
TRACT 49	1.25	1.25	...
TRACT 50	1.25	1.25	...
TRACT 51	1.25	1.25	...
TRACT 52	1.25	1.25	...
TRACT 53	1.25	1.25	...
TRACT 54	1.25	1.25	...
TRACT 55	1.25	1.25	...
TRACT 56	1.25	1.25	...
TRACT 57	1.25	1.25	...
TRACT 58	1.25	1.25	...
TRACT 59	1.25	1.25	...
TRACT 60	1.25	1.25	...
TRACT 61	1.25	1.25	...
TRACT 62	1.25	1.25	...
TRACT 63	1.25	1.25	...
TRACT 64	1.25	1.25	...
TRACT 65	1.25	1.25	...
TRACT 66	1.25	1.25	...
TRACT 67	1.25	1.25	...
TRACT 68	1.25	1.25	...
TRACT 69	1.25	1.25	...
TRACT 70	1.25	1.25	...
TRACT 71	1.25	1.25	...
TRACT 72	1.25	1.25	...
TRACT 73	1.25	1.25	...
TRACT 74	1.25	1.25	...
TRACT 75	1.25	1.25	...
TRACT 76	1.25	1.25	...
TRACT 77	1.25	1.25	...
TRACT 78	1.25	1.25	...
TRACT 79	1.25	1.25	...
TRACT 80	1.25	1.25	...
TRACT 81	1.25	1.25	...
TRACT 82	1.25	1.25	...
TRACT 83	1.25	1.25	...
TRACT 84	1.25	1.25	...
TRACT 85	1.25	1.25	...
TRACT 86	1.25	1.25	...
TRACT 87	1.25	1.25	...
TRACT 88	1.25	1.25	...
TRACT 89	1.25	1.25	...
TRACT 90	1.25	1.25	...
TRACT 91	1.25	1.25	...
TRACT 92	1.25	1.25	...
TRACT 93	1.25	1.25	...
TRACT 94	1.25	1.25	...
TRACT 95	1.25	1.25	...
TRACT 96	1.25	1.25	...
TRACT 97	1.25	1.25	...
TRACT 98	1.25	1.25	...
TRACT 99	1.25	1.25	...
TRACT 100	1.25	1.25	...



B.68

P.56

STATEMENT OF PURPOSE

The within Drainage Plan ("Drainage Plan") for North Forty, P.U.D. Subdivision is filed for record as it is an attachment to the 17' Amended Plat for North Forty P.U.D. Subdivision, filed for record February 9, 2000, in Plat Book, 52 of Page 47 of the records of Pitkin County, Colorado ("17' Amended Plat"). The Drainage Plan was required to be an attachment to and part of the Amended Plat, but through inadvertence, was not attached.

RIDGER LLC

By *John R. McBride*  
John R. McBride, Manager

COUNTY ATTORNEY APPROVAL

The foregoing Statement of Purpose is approved by the Pitkin County Attorney and the within Drainage is submitted for recording as a part of the 17' Amended Plat.

February 14, 2004

John M. Elk, Pitkin County Attorney

APPROVAL OF COUNTY ENGINEER

The within Drainage Plan for North Forty PUD is approved by the Pitkin County Engineering Department. The County Engineer, upon his or her independent engineering evaluation of the within Drainage Plan by the Pitkin County Engineering Department, Pitkin County, to elected officials, agencies, departments, employees of contractors

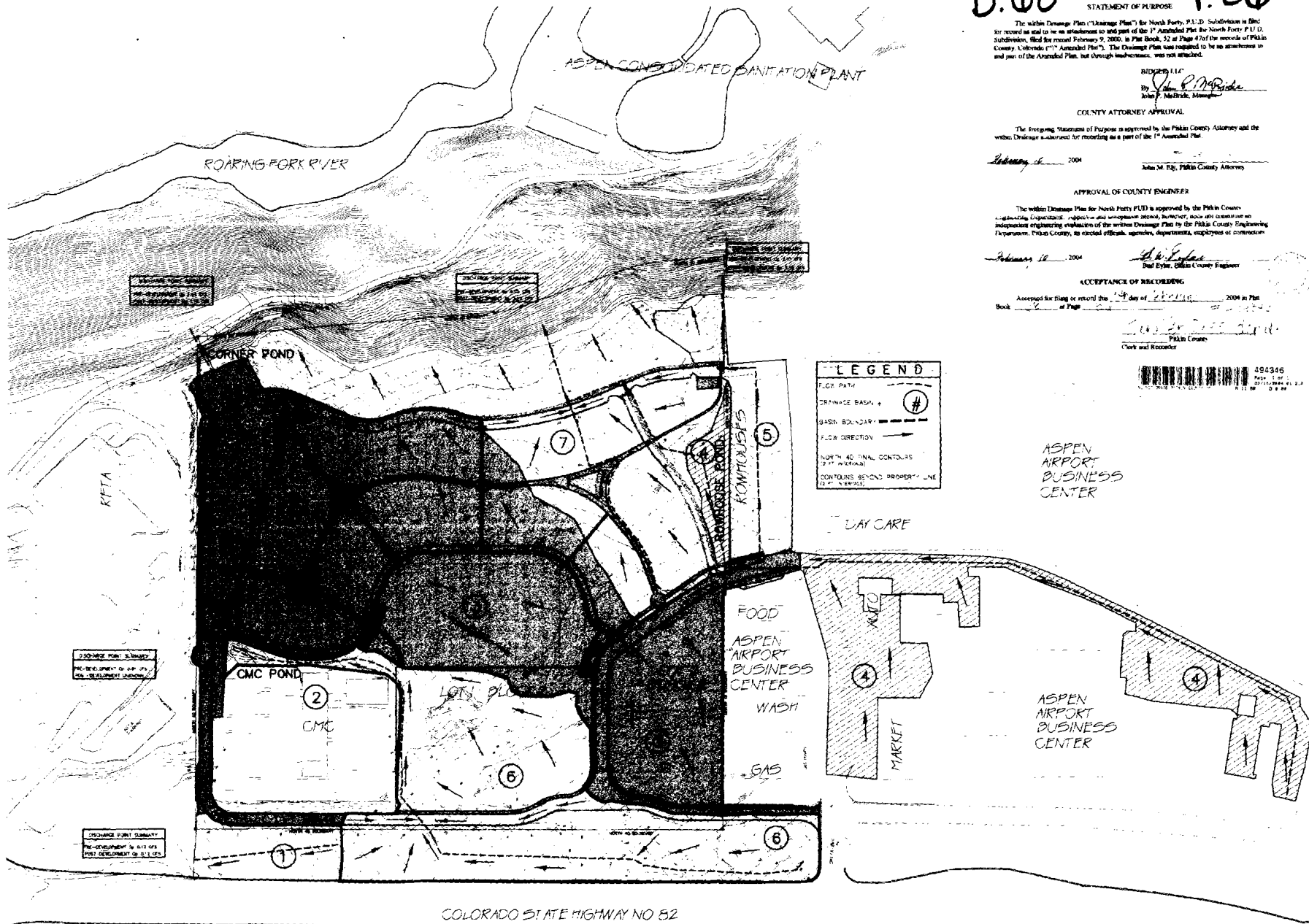
February 18, 2004

Bob Ely, Pitkin County Engineer

ACCEPTANCE OF RECORDING

Accepted for filing or record this 14 day of February, 2004 in Plat Book \_\_\_\_\_ of Page \_\_\_\_\_

*John M. Elk*  
Pitkin County  
Clerk and Recorder



**LEGEND**

- LOC PATH
- DRAINAGE BASIN #
- BASE BOUNDARY
- FLOW DIRECTION
- NORTH 40' TYPICAL CONTROLS (2' TYPICAL)
- CONTROLS BEYOND PROPERTY LINE (2' TYPICAL)

ASPEN AIRPORT BUSINESS CENTER

ASPEN AIRPORT BUSINESS CENTER

DAY CARE

FOOD

ASPEN AIRPORT BUSINESS CENTER

WASH

SAS

MICRO

MARKET

COLORADO STATE HIGHWAY NO 52

COPYRIGHT

TIMBERLINE ENGINEERING  
P.O. BOX 651, CARBONDALE, CO 81623  
PHONE: 970.963.7777

DRAWN BY  
DP

NORTH FORTY PUD  
PITKIN COUNTY COLORADO

DATE  
03/21/02

REVISIONS

SCALE  
1" = 80'

DRAWING  
POST-DEVELOPMENT  
DRAINAGE BASINS  
and  
FLOW PATHS

SHEET  
D2